

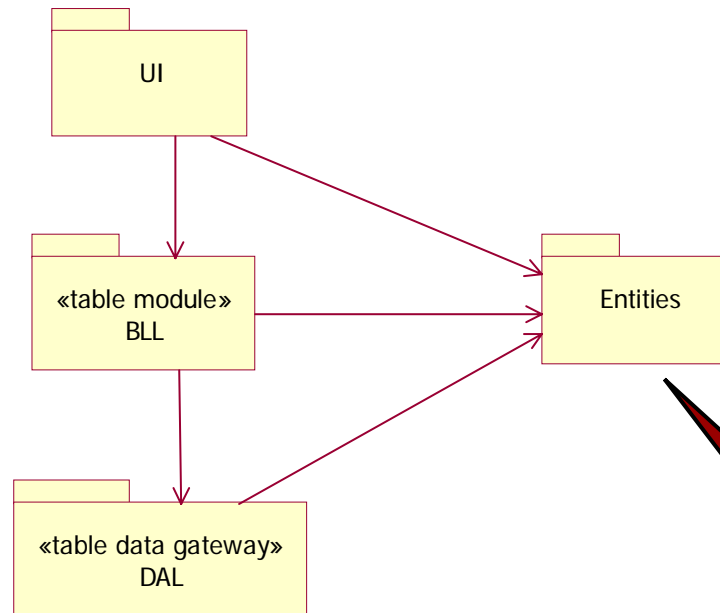
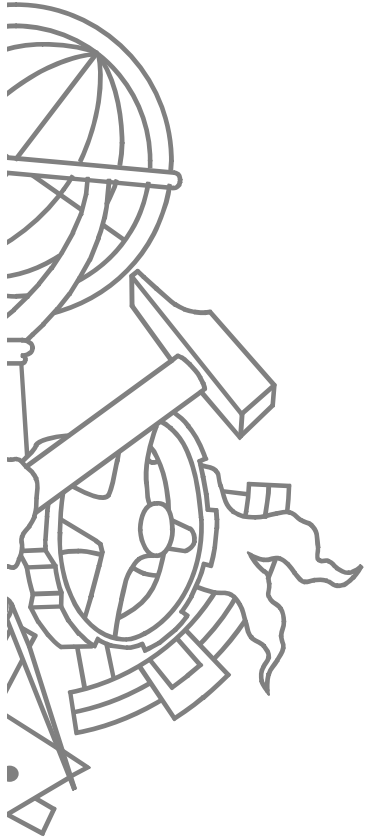


---

Table Module com Table Data  
Gateway usando *custom*  
*classes*

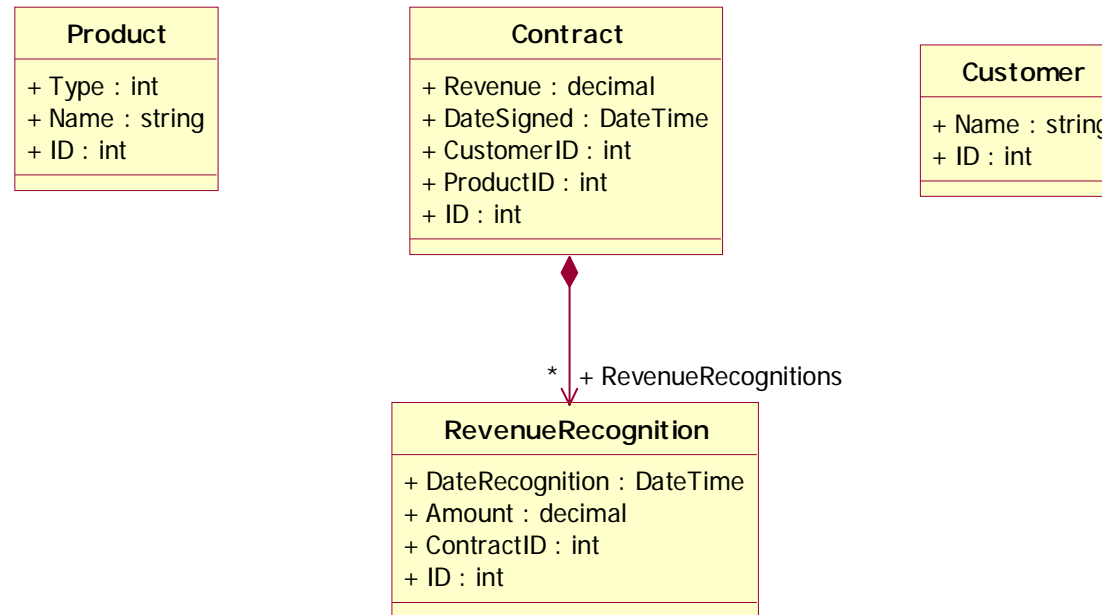
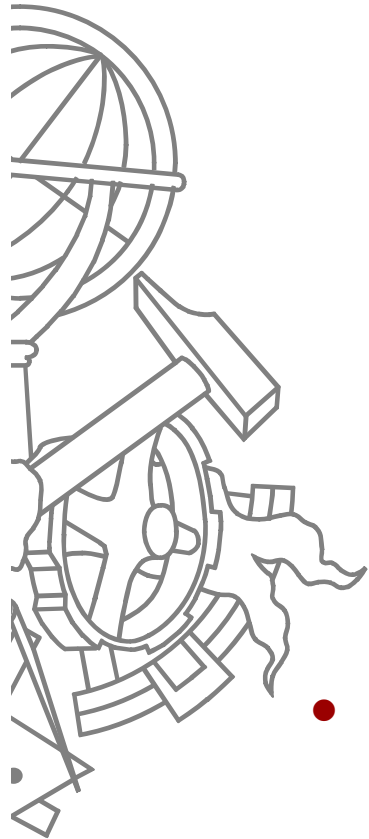
# Packages

---



Estas classes  
**apenas**  
possuem  
atributos

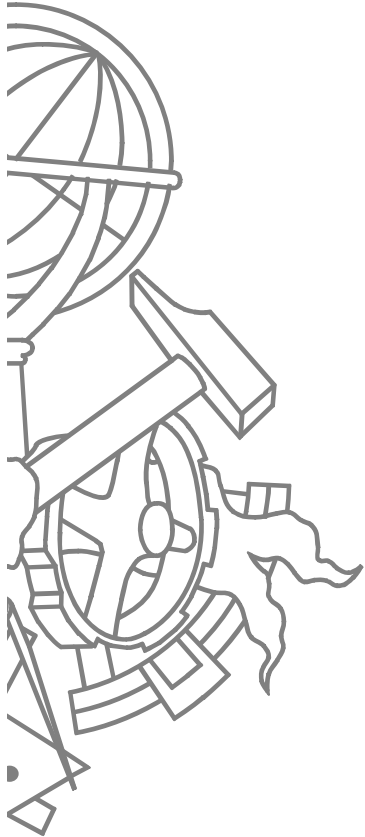
# Entidades de negócio



- Poderia não existir a ligação entre **Contract** e **RevenueRecognition**.
- Neste caso como o número de sub-objects é pequeno, poderia fazer-se o carregamento completo do contrato

# Classes BLL

---

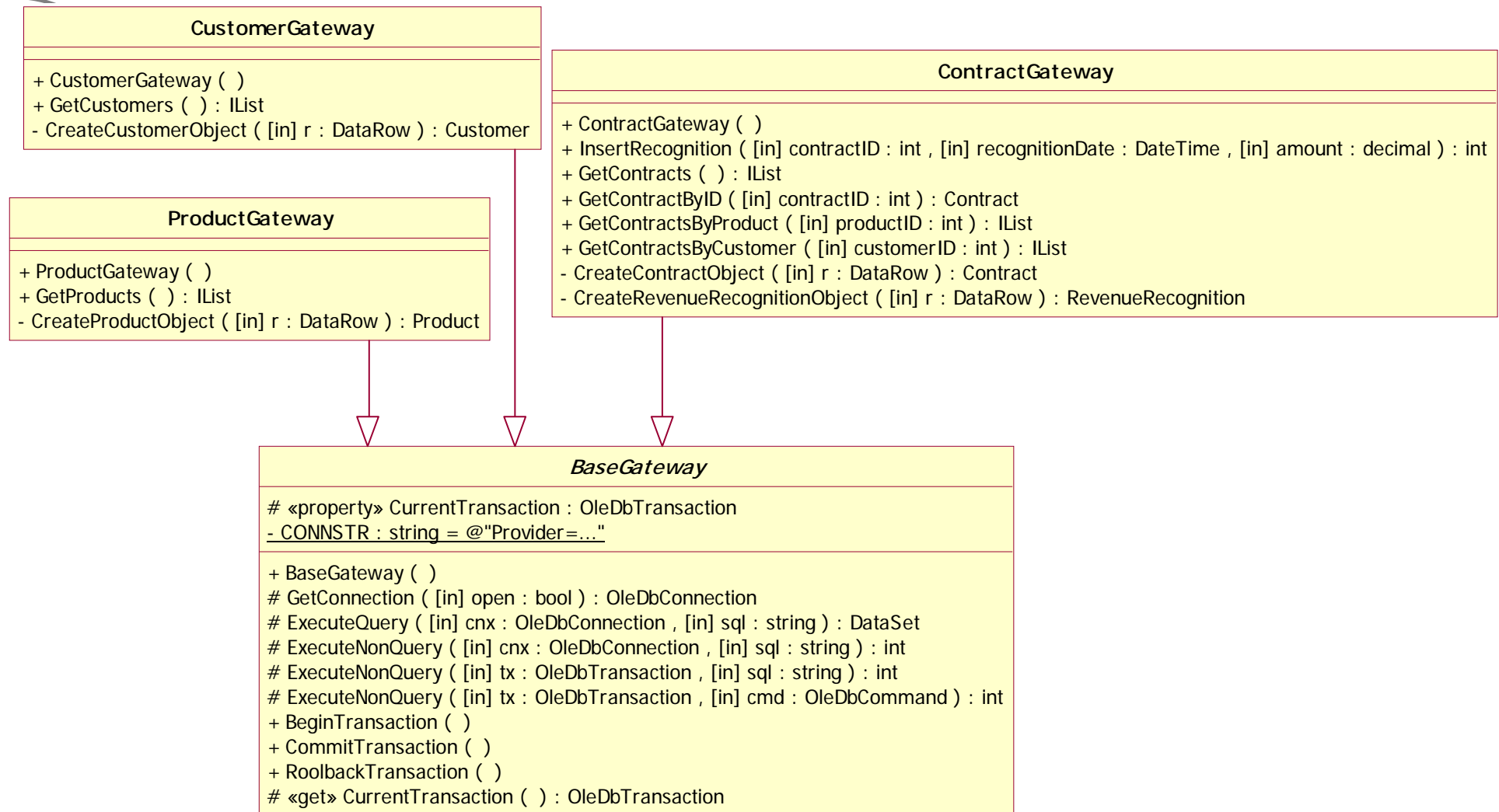


Contract
+ Contract ( ) + RecognizedRevenue ( [in] contractID : int , [in] asOf : DateTime ) : Money + CalculateRevenueRecognitions ( [in] contractID : int ) + GetContracts ( ) : IList + GetContractsByProduct ( [in] productID : int ) : IList + GetContractsByCustomer ( [in] customerID : int ) : IList

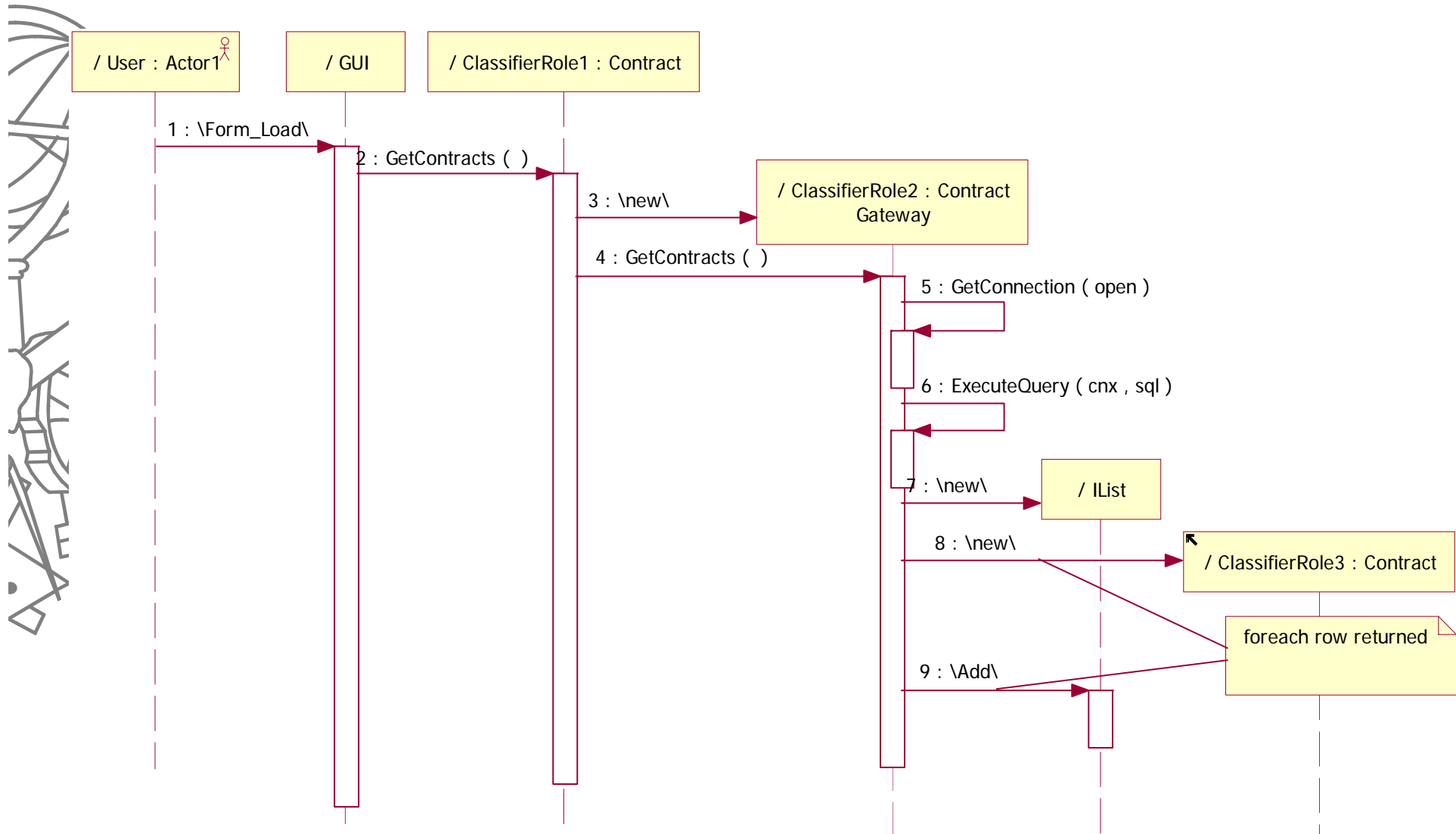
Customer
+ Customer ( ) + GetCustomers ( ) : IList

Product
+ Product ( ) + GetProducts ( ) : IList

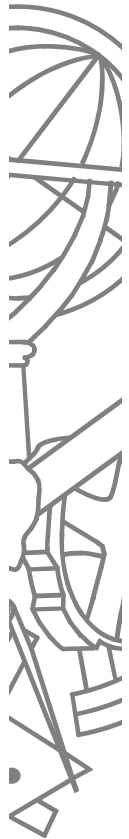
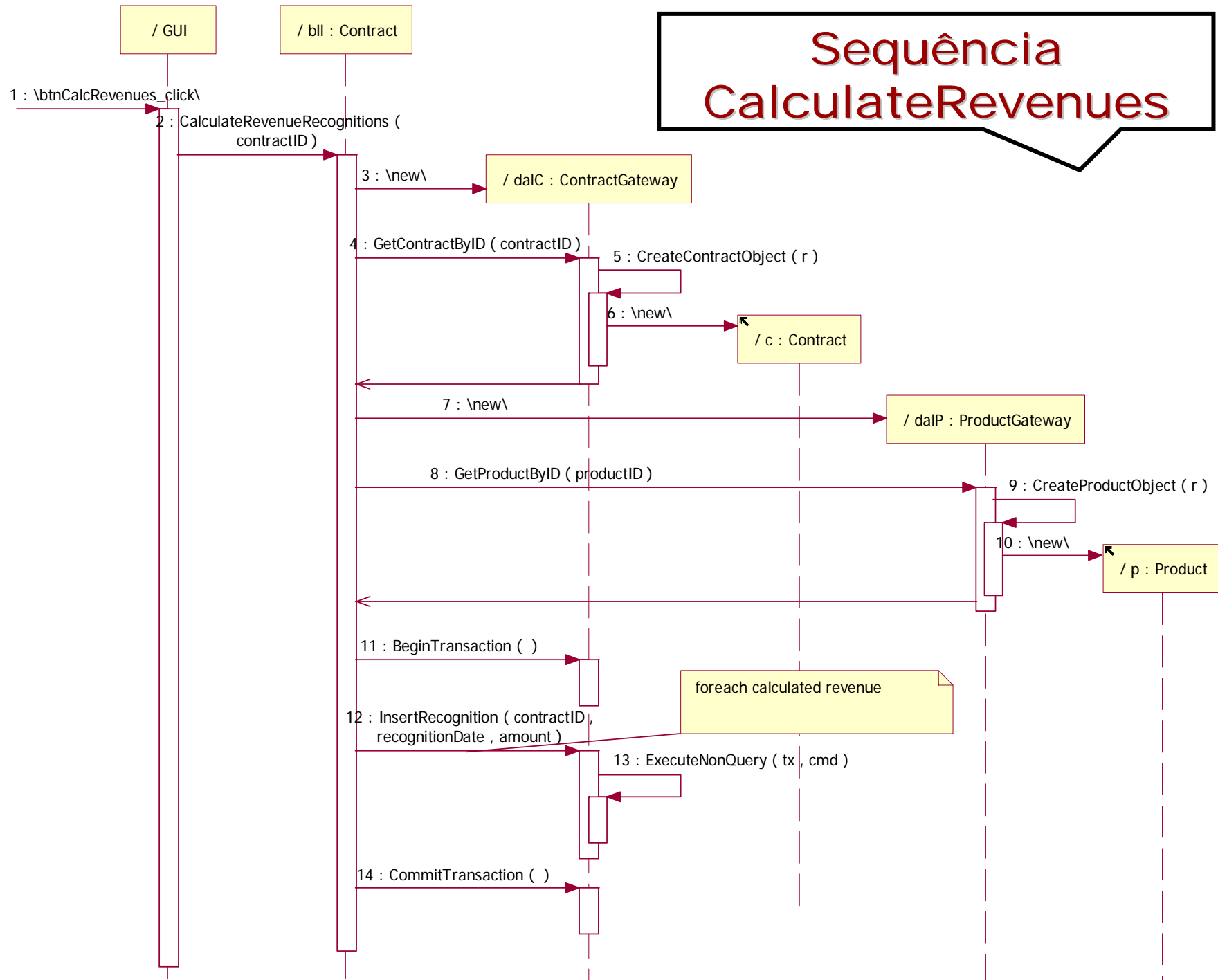
# Classes DAL



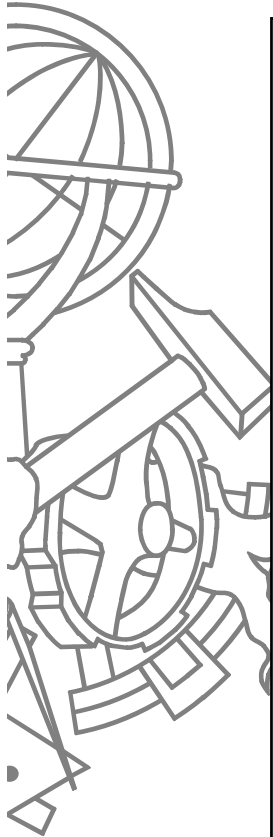
# Sequência GetContracts



# Sequência CalculateRevenues



# CalculateRevenues()



```
public void CalculateRevenueRecognitions(int contractID) {
    DAL.ContractGateway dalC = new DAL.ContractGateway();
    Entities.Contract c = dalC.GetContractByID(contractID);

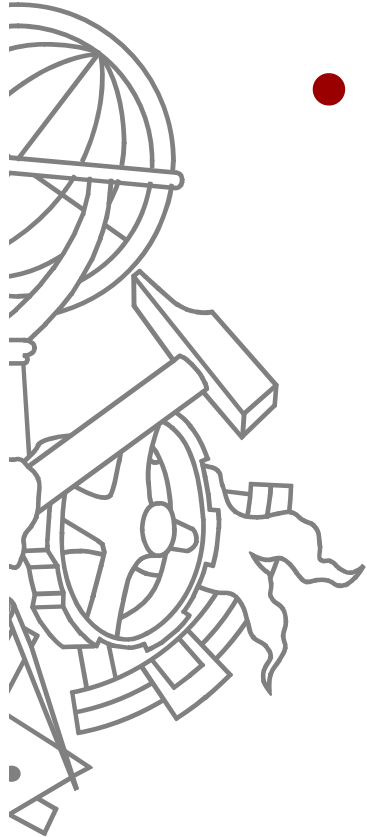
    DAL.ProductGateway dalP = new DAL.ProductGateway();
    TM.Entities.Product p = dalP.GetProductByID(c.ProductID);

    dalC.BeginTransaction();
    switch (p.Type) {
        case "PT":
            dalC.InsertRecognition(contractID, c.DateSigned, c.Revenue);
            break;
        case "FC":
            decimal[] alcs = Money.Allocate(c.Revenue, 3);
            dalC.InsertRecognition(contractID, c.DateSigned, alcs[0]);
            dalC.InsertRecognition(contractID, c.DateSigned.AddDays(60), alcs[1]);
            dalC.InsertRecognition(contractID, c.DateSigned.AddDays(90), alcs[2]);
            break;
        case "BD":
            decimal[] alcs = Money.Allocate(c.Revenue, 3);
            dalC.InsertRecognition(contractID, c.DateSigned, alcs[0]);
            dalC.InsertRecognition(contractID, c.DateSigned.AddDays(30), alcs[1]);
            dalC.InsertRecognition(contractID, c.DateSigned.AddDays(60), alcs[2]);
            break;
    }
    dalC.CommitTransaction();
}
```



# Notas

---



- Poderia optar-se por ter uma representação do objecto contrato nas entidades de negócio que possuísse como atributos o código do produto e o tipo, evitando assim a chamada ao segundo *finder*